

HEALTH IMPACTS OF HIGH VOLTAGE POWER LINES

The Myth:

Overhead high voltage power lines and associated electromagnetic fields (EMFs) have no negative impacts on health.

The Facts:

- The following negative health outcomes have been conclusively linked with EMF exposure in the

scholarly literature: a variety of cancers, leukemia, tumor growth, skin growths, abnormal cell activity, sleep and daily rhythm disturbances, perception and memory differences and impairment, genetic defects, hormone regulation and production, gland deficiencies, mental and behavioral problems, immune system deficiencies, nervous system disorders, fetal development problems, miscarriages, birth defects, and blood and circulatory problems (Wagner 2006).

- The U.K. Stakeholder Advisory Group on Extremely Low Frequency EMFs (2007) cited links between EMFs and the following adverse effects: childhood and adult leukemia, adult brain cancer, Alzheimer's disease, Lou Gehrig's disease, breast cancer, other childhood cancers, depression, electrical sensitivity symptoms, certain types of heart disease, miscarriage and suicide.
- Many occupational, epidemiological (population health and illness), animal and cell studies reported in the peer-reviewed literature by the Colchester

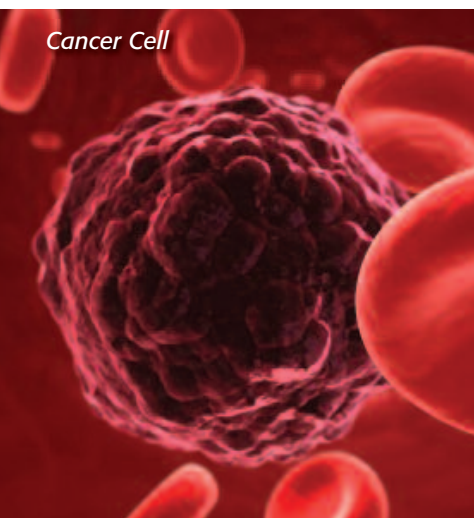


Childhood Leukemia Victim

School Parents' Association (1988) show major increases in the occurrences of many diseases and other health problems in children and adults exposed to EMFs. These include: leukemia, non-Hodgkins lymphoma, intestinal cancer, myeloid leukemia, brain tumors, brain cancer, immune system deficiencies, DNA uncoiling, retardation of fertilization, fetal resorption, increased infant mortality, embryo abnormality and stunting of growth.

- A comprehensive review of recorded EMF effects on human health and behaviour conducted by Rubtsova (undated) included those effects recorded elsewhere in the literature as well as the following: fatigue, decrease in visual and motor reaction time, attention and memory deterioration, persistent mental disorders, headache, nausea, male sexual dysfunction, changes in cardio-respiratory functions, nervous system changes, and embryonic death.
- See other RETA Fact Sheets for more detailed facts on the impacts of overhead high voltage power line EMFs on specific diseases and other adverse health effects.

Cancer Cell



**For information
on what you can do
go to www.reta.ca**

RETA
Responsible Electricity
Transmission for Albertans